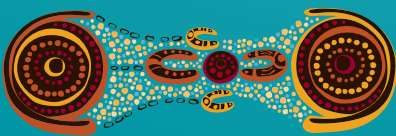




The impacts

Advancing the lives of the people and protecting the landscape of remote Australia.



NINTI ONE INNOVATION FOR REMOTE AUSTRALIA

Ninti One's
enduring
impacts
for remote
Australia.

- Eighty per cent of Australia's land mass is classified as remote.
- It is home to just three per cent of the nation's population.
- A significant amount of Australia's export income is derived from the area.
- It has a high proportion of small businesses per capita.

FEATURES OF REMOTE AUSTRALIA

- Residents have poorer health outcomes and lower education and employment levels.
- The wealth potential is enormous, especially in tourism, agriculture and minerals.
- Geographical barriers present unique challenges – and costs – to communicating, conducting business and delivering services.

set up for success:

HOW NINTI ONE WORKS

A full appreciation of Ninti One requires an understanding of the way it is structured.

To operate effectively in remote Australia, we must work at ground level and take into account the broader social, environmental and cultural factors specific to the region. Your network needs to span a continent, yet reach those who live in remote communities. Your team needs unique knowledge of the land and its people and an understanding of economic development at all levels from local to national.

This is the tough challenge that Ninti One meets daily. With more than sixty partners across Australia who facilitate our work, we are well-placed to deliver long-lasting results that make a difference from the ground up.

We engage with researchers from universities and tertiary institutions across the country and employ Aboriginal Community Researchers who can reach local communities like no-one else can.

Ninti One has both the expertise and resources to coordinate projects of varying types and complexities. We achieve our results by taking a whole-of-systems approach to our work. This means we take into account



complex, multidisciplinary factors that contribute to a situation and then seek and apply tailored solutions. Our processes are anchored firmly to community engagement and feedback.

It is a proven system which ensures that the best and most appropriate expertise is applied to a particular project and that local knowledge is closely integrated.

NINTI ONE IS A UNIQUE ORGANISATION: FOR THE GOALS IT SETS ITSELF, ITS METHOD OF WORKING AND FOR THE SHEER VASTNESS OF THE AREA IN WHICH IT OPERATES.

the impact of ninti one

Ninti One's organisational focus is on having a positive *impact*. This means generating things that contribute to and enhance social functioning and wellbeing for people in remote Australia. It means demonstrable improvements in people's lives and expansion of their options.

Many of Ninti One's impacts are in the form of 'public goods' from which benefits are diffused widely among individuals and communities and over time, making them very difficult to measure. Even where tangible impacts can be readily identified, the sparseness of markets in remote Australia means that prices do not always show the value of alternative uses of those resources.

Despite this, Ninti One has invested in detailed evaluation of the costs and impacts of selected projects. This evaluation shows that since its inception in 2003, Ninti One has **GENERATED OVER \$239 MILLION IN ECONOMIC AND SOCIAL BENEFITS FOR REMOTE AUSTRALIA.**

THE IMPACT NINTI ONE ACHIEVES IS CLASSIFIED INTO FIVE SPHERES:



the impacts:

ADVANCING THE LIVES AND PROTECTING THE LANDSCAPES OF REMOTE AUSTRALIA

Since it began in 2003, Ninti One has achieved significant and lasting impacts in remote Australia.

We take the research results generated by our work and focus this information to effect change. We translate these outcomes into products that are designed to target areas of policy, education and future research investment. The uptake and influence of this work underpins our impact. This application of our research has had critical impact in areas such as health, community development, agriculture and the environment.

NINTI ONE IS A UNIQUE ORGANISATION: FOR THE GOALS IT SETS ITSELF, ITS METHOD OF WORKING AND FOR THE SHEER VASTNESS OF THE AREA IN WHICH IT OPERATES.



- Eighty per cent of Australia's land mass is classified as remote.
- It is home to just three per cent of the nation's population.
- A significant amount of Australia's export income is derived from the area.
- It has a high proportion of small businesses per capita.

FEATURES OF REMOTE AUSTRALIA

- Residents have poorer health outcomes and lower education and employment levels.
- The wealth potential is enormous, especially in tourism, agriculture and minerals.
- Geographical barriers present unique challenges – and costs – to communicating, conducting business and delivering services.

ninti one impacts on

REMOTE AUSTRALIA
BY ENHANCING THE
CAPACITY OF BROAD
AREAS OF OPERATION.
THESE INCLUDE:

NATURAL CAPITAL

Nature capital consists of the rehabilitation of landscapes, Aboriginal and Torres Strait Islander ecological knowledge and management of feral or invasive species.

Project examples: *Australian Feral Camel Management Project, Australian Collaborative Rangelands Information System and Bush Foods*

Estimated returns to selected project, by key area:

AREA OF OPERATION Sub-function Specific project/activity	Investment/ costs \$'000	Estimated impacts \$'000	Cost/ benefit ratio
--	--------------------------------	--------------------------------	---------------------------

NATURAL CAPITAL

Natural resource management

Feral Camel Management	17,500	51,857	2.96
Aust. Collaborative Rangelands Info. System	2,800	4,297	1.53
Bush Foods	1,500	5,389	3.59
Average			2.88



ENHANCING SOCIAL AND CULTURAL CAPITAL

Social and cultural capital consists of improved governance in Aboriginal and Torres Strait Islander communities, including capacity for self-government. It also entails maintaining Aboriginal and Torres Strait Islander culture.

Project examples: *Best Practice in Remote Communities*

Estimated returns to selected project, by key area:

AREA OF OPERATION Sub-function Specific project/activity	Investment/ costs \$'000	Estimated impacts \$'000	Cost/ benefit ratio
--	--------------------------------	--------------------------------	---------------------------

SOCIAL AND CULTURAL CAPITAL

Improved community governance

Best Practice in Remote Communities	750	4,995	6.66
Average			6.66





HUMAN CAPITAL

Human capital is defined as employment for Aboriginal and Torres Strait Islander people, cross-cultural competence, education, training and work experience.

Project examples: *Cattle and Country, Aboriginal Community Researchers*

Estimated returns to selected project, by key area:

AREA OF OPERATION Sub-function Specific project/activity	Investment/ costs \$'000	Estimated impacts \$'000	Cost/ benefit ratio
--	--------------------------------	--------------------------------	---------------------------

HUMAN CAPITAL

Aboriginal & Torres Strait Islander employment

Cattle and Country	138	358	2.59
Aboriginal Community Researchers	295	2084	7.06
Average			5.65



KNOWLEDGE CAPITAL

Knowledge capital comprises technology and innovation, traditional Aboriginal and Torres Strait Islander knowledge and intellectual property, improved government policy, research and engagement protocols, improved work and management practices and access to information about remote Australia.

Project examples: *Precision Pastoral Pty Ltd, WaterSmart, Living on Country, Bush Foods, Cattle and Country, Best Practice in Remote Communities*

Estimated returns to selected project, by key area:

AREA OF OPERATION Sub-function Specific project/activity	Investment/ costs \$'000	Estimated impacts \$'000	Cost/ benefit ratio
--	--------------------------------	--------------------------------	---------------------------

KNOWLEDGE CAPITAL

Technology and innovation

Precision Pastoral PL	1,000	6,148	6.15
WaterSmart	800	5,774	7.22
Average			6.62

Traditional Aboriginal and Torres Strait Islander knowledge and intellectual property

Living on Country	1,500	9,304	6.20
Bush foods	1,500	5,389	3.59
Average			4.90

Improved management, HR & work practices

Cattle and Country	138	358	2.61
--------------------	-----	-----	------

Research and engagement protocols

Best Practice in Remote Communities	750	4,995	6.66
Average			5.62

PHYSICAL CAPITAL

While Ninti One is not involved directly in providing infrastructure, our work contributes to shaping the knowledge for it.

Ninti One's expertise includes:

- Building knowledge of, and in, remote Australia
- Building and managing research partnerships
- Contracting and project management
- Policy advice
- Cross-cultural research
- Research translation
- Building capacity and skills back into communities
- Enterprise and business development, especially in Aboriginal and Torres Strait Islander communities
- Developing appropriate technologies
- Knowledge sharing: through remote Australia Online we disseminate research findings and strive to get new knowledge into the hands of those who can use it.



CONTACT

Talk to us about connecting and succeeding in remote Australia. Please contact:

Rod Reeve
Managing Director
Telephone: +61 (0)8 8959 6000
Email: rod.reeve@nintione.com.au

Lyn Allen
General Manager, Business Development Unit
Mobile: +61 (0)401 116 894
Email: lyn.allen@nintione.com.au

www.nintione.com.au