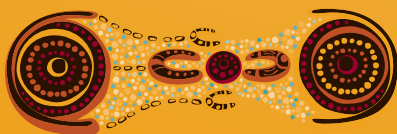


# The key

to the community intelligence of  
remote Australia



**NINTI** • **INNOVATION**  
**ONE** • **FOR REMOTE**  
**AUSTRALIA**





---

# PROVEN METHODOLOGIES DELIVERING BETTER RESEARCH AND COMMUNITY DEVELOPMENT OUTCOMES

---

Since inception in 2003, Ninti One has established a substantial footprint in remote Australia as part of its quest to research and improve economic participation in these regions.

This has generated important understandings about all aspects of life and society in remote areas and has equipped Ninti One with the capability to design and execute scientific, economic and social research as well as community development projects in these fields:

- Community engagement
- Program evaluation and monitoring
- Social and economic systems
- Business enterprise development and entrepreneurship
- Function and sustainability of remote settlements
- Intellectual property management
- Natural resource management and land issues
- Cultural knowledge and its uses
- Governance in remote regions
- Remote tourism
- Health & well-being
- Remote services
- Energy and water
- Partnerships

---

## OPERATING ACROSS REMOTE AUSTRALIA

---



---

## A NETWORK OF TRAINED COMMUNITY RESEARCHERS

---



Australia has a rich and incredibly complex Aboriginal and Torres Strait Islander culture. The language tapestry alone is vast with up to 150 different languages commonly spoken over an area spanning more than one million square kilometres.



**KEY RESEARCH LOCATIONS  
OF NINTI ONE**

Local knowledge is crucial to understanding the context as a 'one-solution fits all' approach is ineffective. With a growing team of skilled local community researchers, Ninti One offers unparalleled access to communities across remote Australia.

Our team has capacity to give unprecedented insight to organisations seeking to improve policies, enhance service delivery, ignite enterprise development projects and build the knowledge base around Aboriginal and Torres Strait Islander needs and aspirations.

Trained local researchers possess understanding about the processes and practices of their people which are not apparent or open to outsiders.

---

# BETTER INFORMATION, BETTER POLICIES, BETTER PROJECT OUTCOMES

---

Any organisation operating in remote Australia – private, public or non-government – faces enormous challenges.

Time, distance, cost and cultural barriers can impact heavily on the performance and success of any activity while the drive for economic efficiency has never been greater.

By offering high-value custom-sourced intelligence, Ninti One is a critical partner for any enterprise seeking success in Australia’s remote regions.

Ninti One offers the potential for unprecedented success in terms of community engagement, development, employment and policy formulation outcomes.



---

# RAPID DEPLOYMENT

---

Ninti One’s ability to devise and formulate high-quality, specialised research is matched by its capacity to deploy its research team rapidly and over a wide geographical area.

Research team members use a variety of skills – including languages, cultural concepts and local knowledge and a range of methodologies based on the principles of participatory action research to capture the data required.

The team is trained, managed and supported by Ninti One business structure which encompasses some of Australia’s most innovative researchers and scientists.

And at any time, Ninti One can draw on the capabilities of its 60 partners – organisations which are engaged in innovative research in every area that impacts on remote Australia.



**NINTI ONE CAN  
DRAW ON THE  
CAPABILITIES OF  
ITS 60 PARTNERS**

---



**NINTI • INNOVATION  
ONE • FOR REMOTE  
AUSTRALIA**

## ABOUT NINTI ONE

---

Ninti One is a national not-for-profit company that builds opportunities for people in remote Australia through research, innovation, and community development. Ninti One has established a unique collaborative research platform that works with communities, governments, businesses and people in remote regions of Australia. Together we systematically investigate and provide practical responses to the complex issues that drive economic participation.

## CONTACT US

---

Talk to us about research and projects in remote Australia. Please contact:

Jan Ferguson  
Managing Director

Telephone: (08) 8959 6000  
Email: [jan.ferguson@nintione.com.au](mailto:jan.ferguson@nintione.com.au)

[www.nintione.com.au](http://www.nintione.com.au)